



EXR Product Introduction



Why are you here?

During this training class you will learn about the following:

- The background of the Essency EXR water heater.
- Who is it aimed at?
- How it compares to other water heaters on the market.
- Key installation points.
- Commissioning.



Who are Essency?

- General Transmissions – A family business since 1991.
- Specializes in polymer parts for transmissions.
- In-house design, prototyping, testing & validation.
- Design a corrosion-proof polymer water heater, made of recycled & recyclable materials.

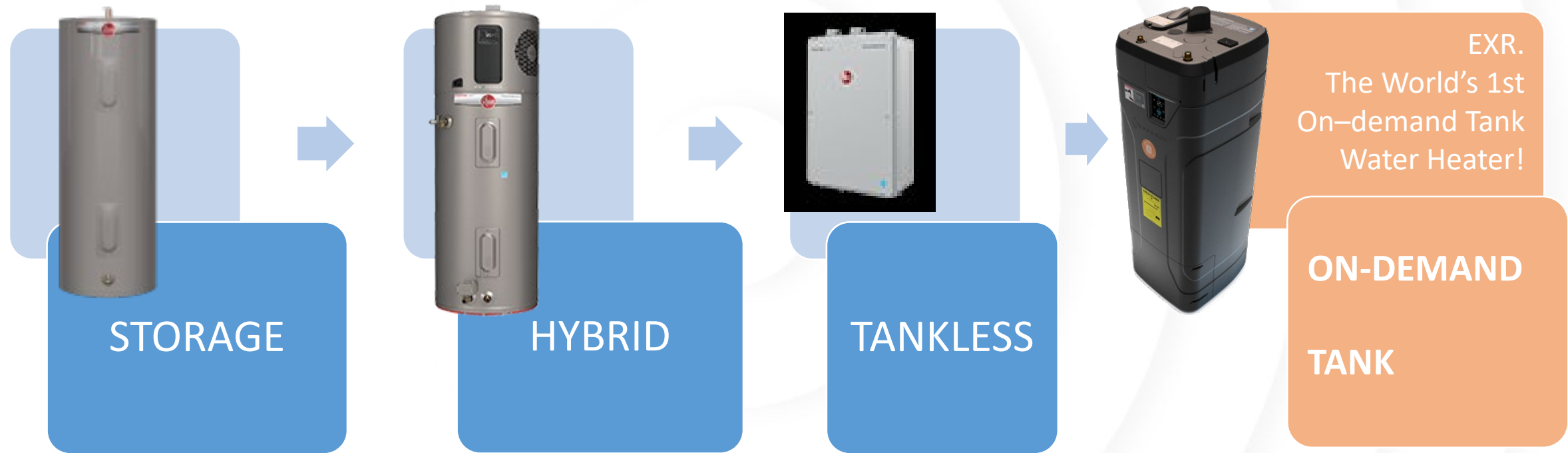


Meet the Essency EXR!



- Combining a tank with on-demand.
- Intelligent control system.
- Durability, connectivity and energy efficiency.

The World of Residential Water Heaters today... and tomorrow



How does it work?

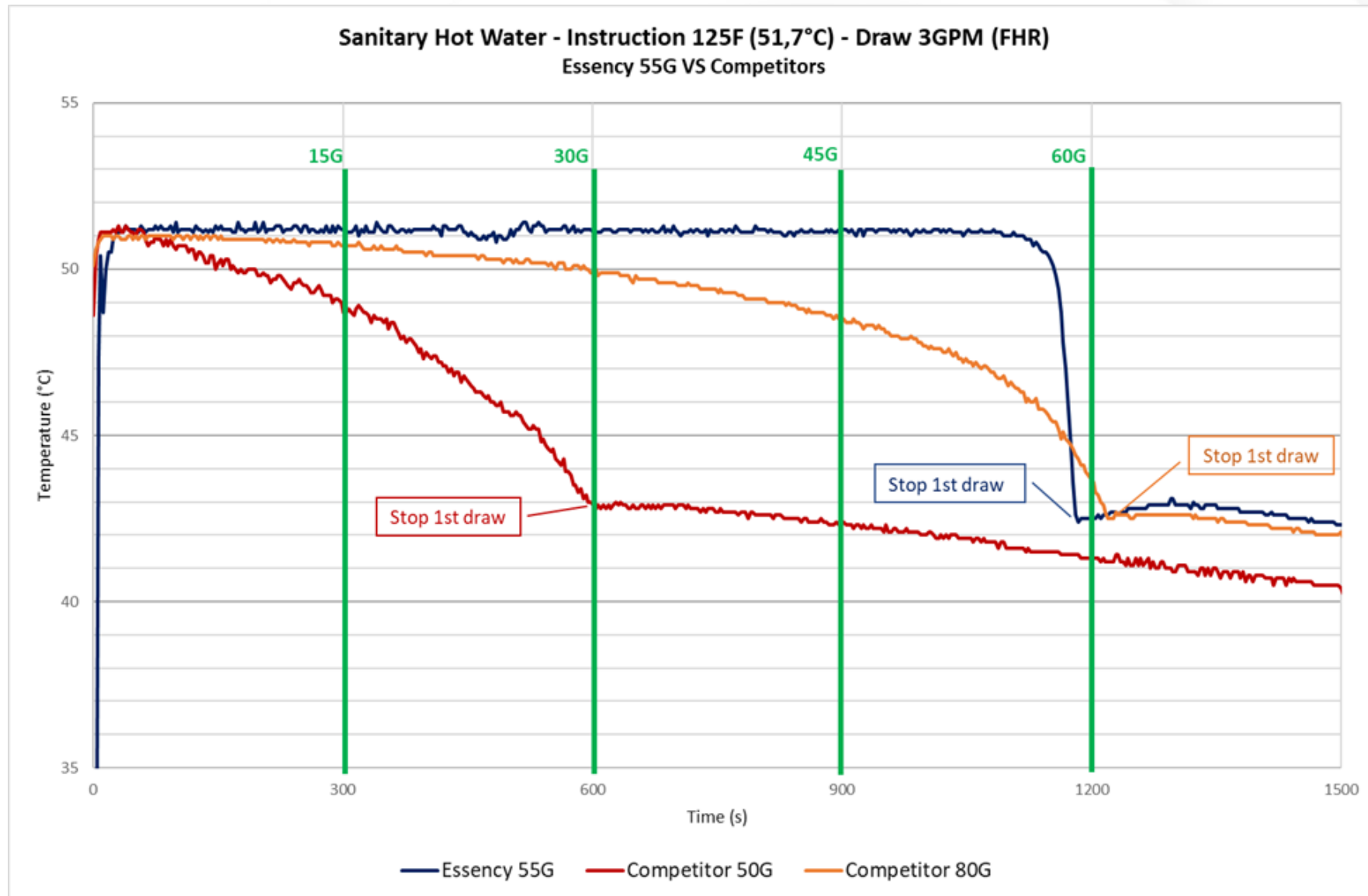
- Water is stored in the tank and used as a transfer medium.
- The stored hot water is pumped into the heat exchanger.
- Atmospheric storage.
- Intelligent controls modulate the amount of heat to the heat exchanger.
- Domestic cold water is heated in the heat exchanger.



TONS of Hot Water!

- **High First Hour Rating (FHR)**
 - **80 gal** in Smart Mode.
 - **100 gal** in Heat+ Mode.
- **21 GPH recovery rate @ 90°F rise (4500W elements)**
- **Stored water stays in the water heater.**
 - No dip tube, no mixing cold water with every draw.

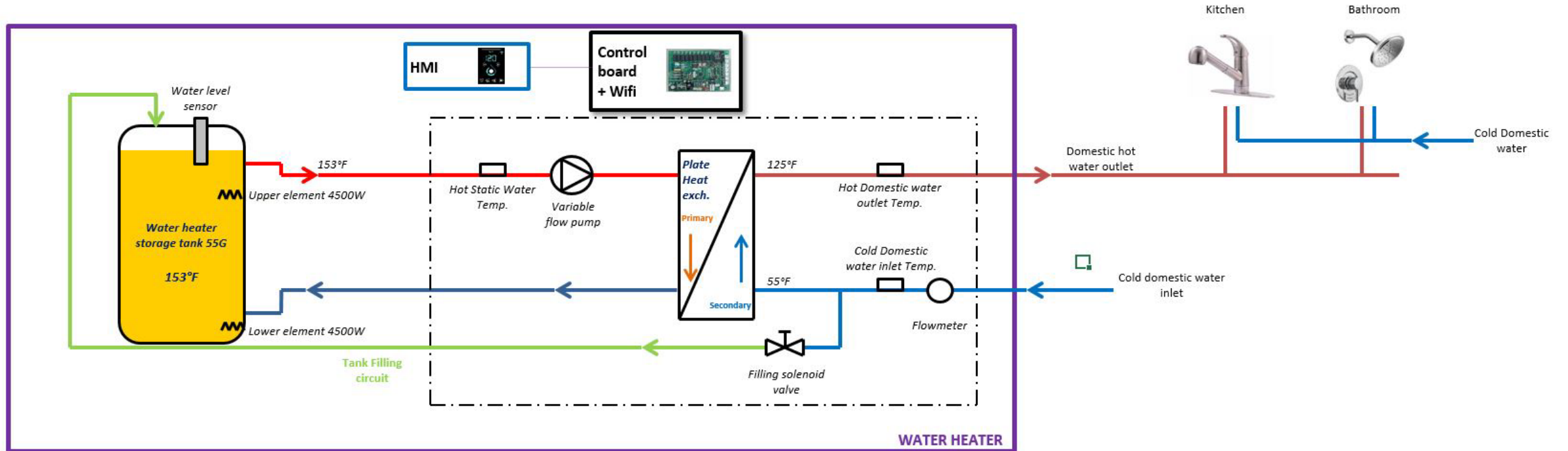
Precise, Stable Temperature (a TRUE FHR)



Essency EXR Intro Video

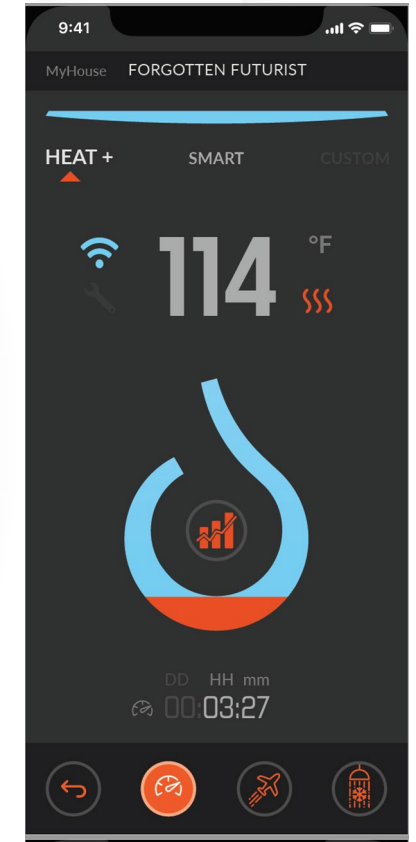
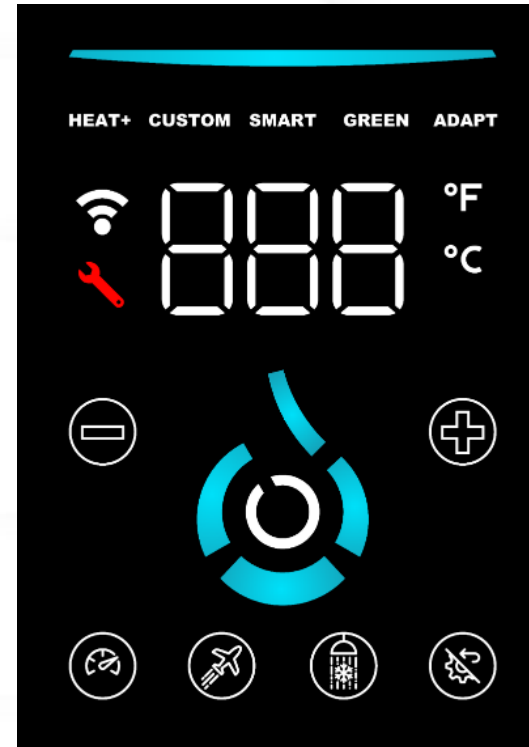
- <https://www.youtube.com/watch?v=sekSC8VbtCo>

ESSENCE EXR System Schematic



SMART Connectivity

- **Wi-Fi enabled**
- **Selectable Modes**
 - Smart
 - Heat+
- **Quick Functions**
 - Boost
 - Vacation
 - WaterSaver
- **Leak Detection**
- **Automatic software updates**

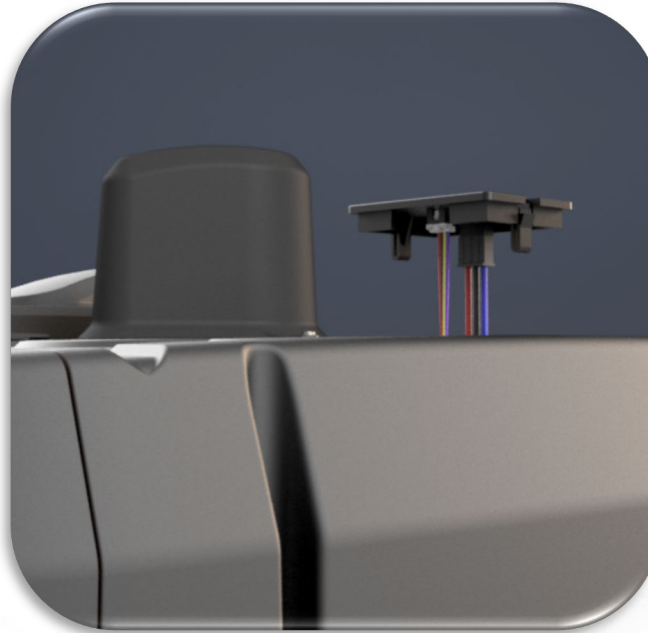


Upgrade EXR to EXR-D

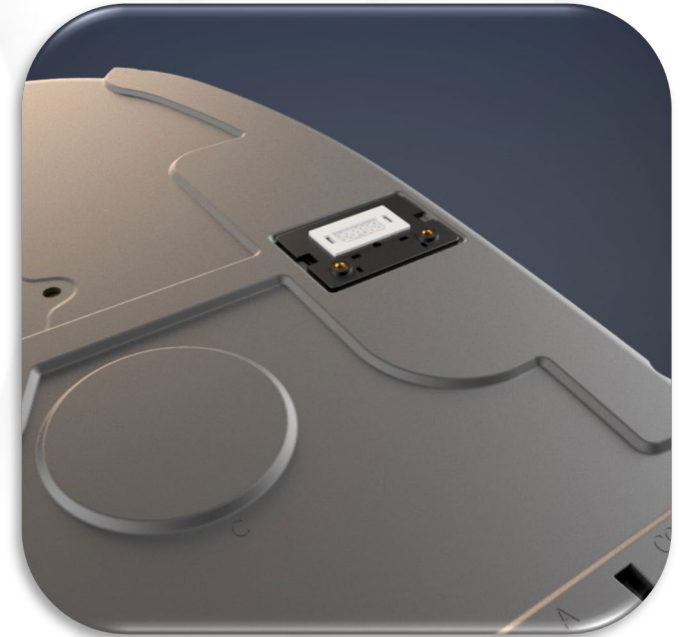
Remove the cover.



Connect the CTA Kit.



EXR is ready for a UCM.



What issues does the Essency EXR solve?

- No scale build up in the tank
- No loss of efficiency from the elements
- Great flow rate
- 240 VAC 30 A electrical connection
- Easy installation

Who is the EXR targeted to?

- Hard water areas.
- Homeowners who want more hot water.
- Environmentally-friendly consumers.
- No gas in the home or prefers electric.
- People who like long lasting products.

Contractors! Why Install Essency?

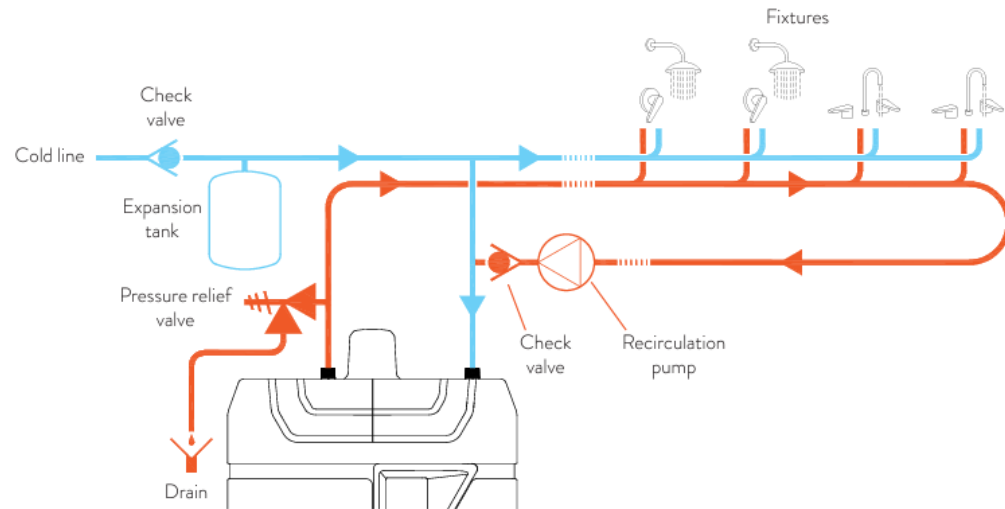
- Provide a durable product.
- Stay connected to the customer
- Differentiate your company.
- Easy to stock
- Easy to install
- Easy to service
- No big box competition.

Before Installing

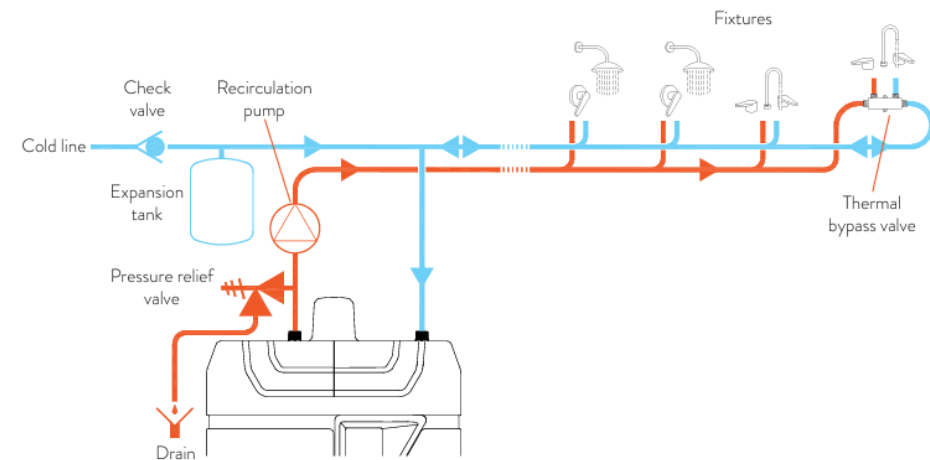
- Be a Pro
- Sign up for ProsOnly Content: <https://go.essencyhome.com/professionals-only-content-application>
 - Watch Installation Video: <https://www.youtube.com/watch?v=GgYsoEf7uuM>
 - Watch App Pairing Video: <https://youtu.be/JIWHGDSb3js>
 - Read Recirculating Article
- Get Trained: In-Person, Virtual
 - Or Book a Private Consultation
- Understand Water Quality – sediment, chlorine, hardness
- Water Connectors are at front, not middle – may need additional pipe/fittings, longer flexes

Recirculation

1. With a dedicated return line :



2. Without a dedicated return line :



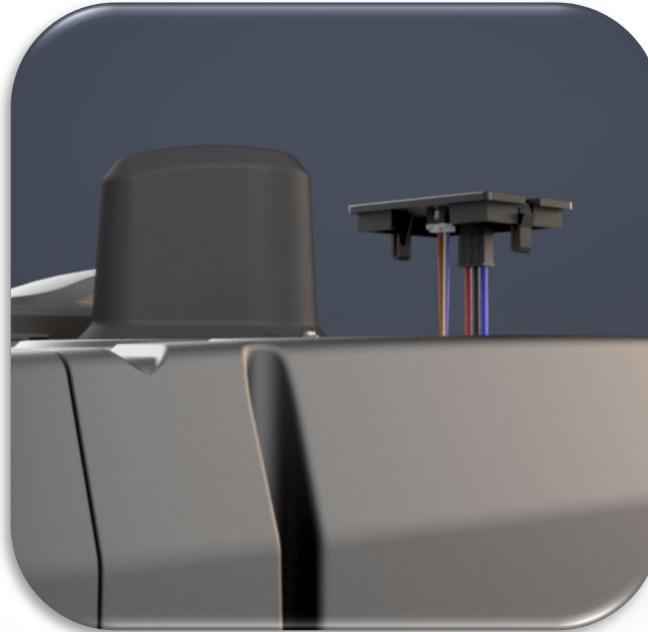
- Flow rate delivered by pump should be between 0.3 and 1 GPM. Ideally, the flow rate would be 0.8 GPM.
- Pump should be operating as little as possible and no more than 6 hours per day (for example 3 hours in the morning, 3 hours in the evening).
In case the ON cycle is 2 hours or more, turn Recirc mode ON (see page 35) to avoid nuisance alarm.
- In any case, it is recommended to limit the velocity in piping < 4 ft/s to avoid any erosion issue.

Upgrade EXR to EXR-D

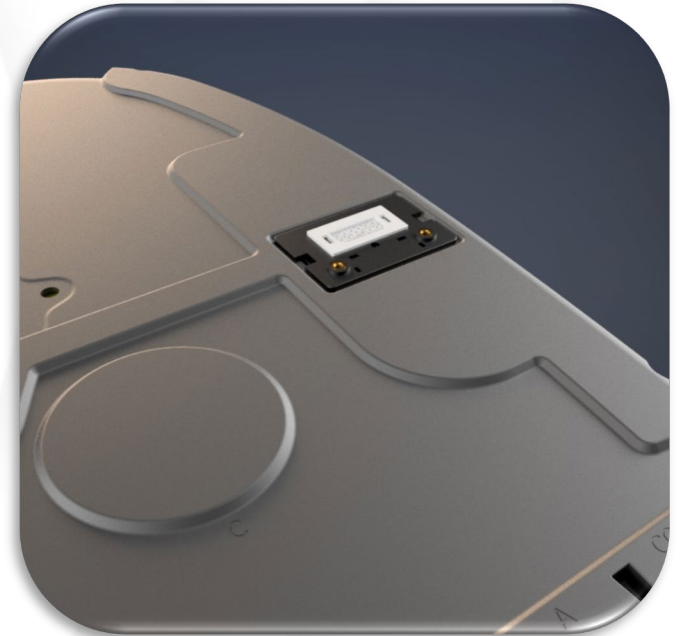
Remove the cover.



Connect the CTA Kit.



EXR is ready for a UCM.

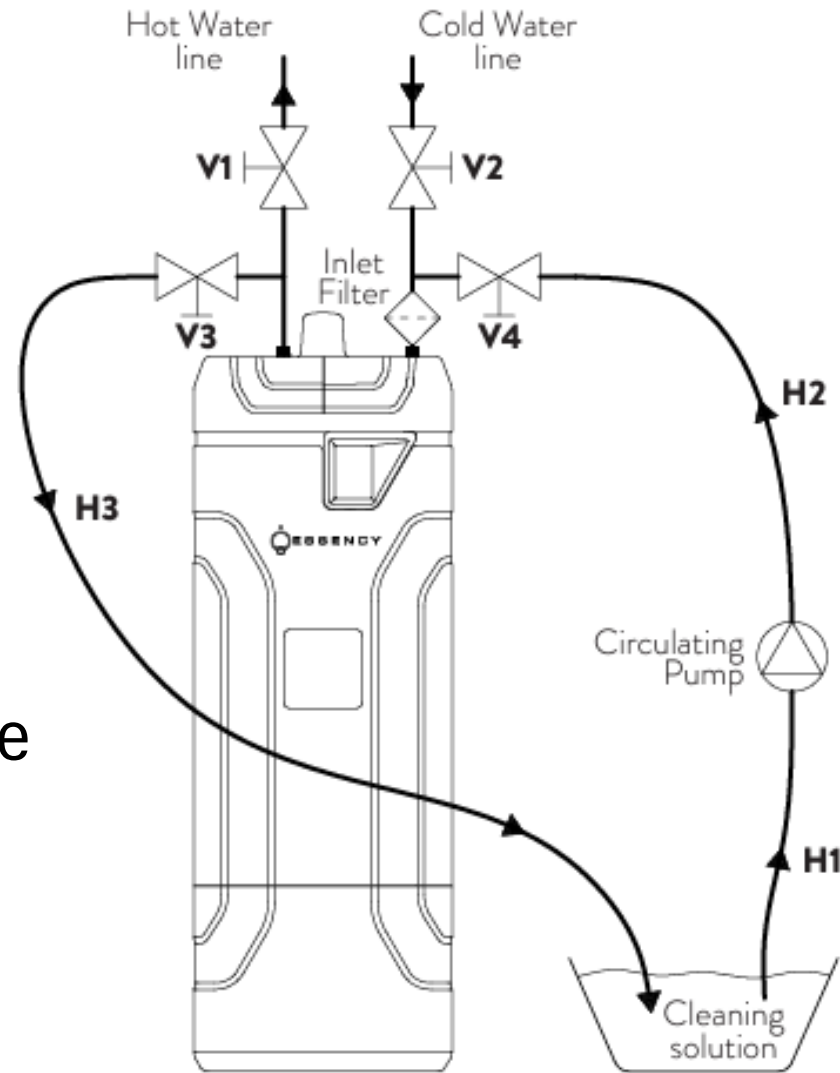


Before Installing

- Stuff you might need...
 - Service Valves.
 - ¾" strain relief.
 - Essency's Custom Drain Pan.
 - Wire cutters/strippers for 10 AWG wire.
 - Timer and/or aquastat for recirculation applications.
 - A multimeter or voltage tester.
 - Demand response module from the electricity provider.

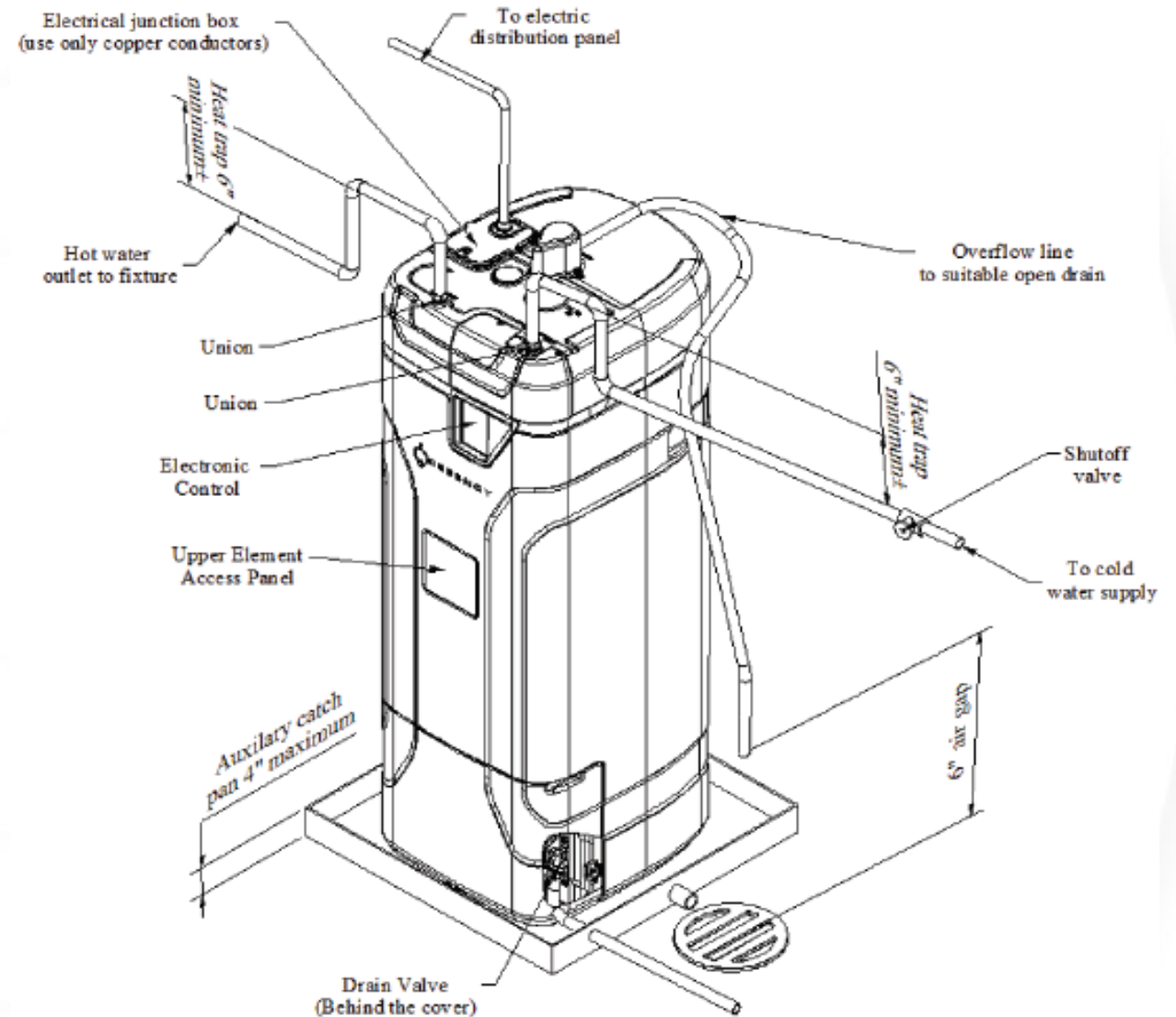
Easy Service

The heat exchanger may require periodic flushing with vinegar.



Easy Installation

- Connect Water
- Connect Power
- Connect Battery
- Auto Fill Process
- Connect to Wi-Fi
- Update the Software

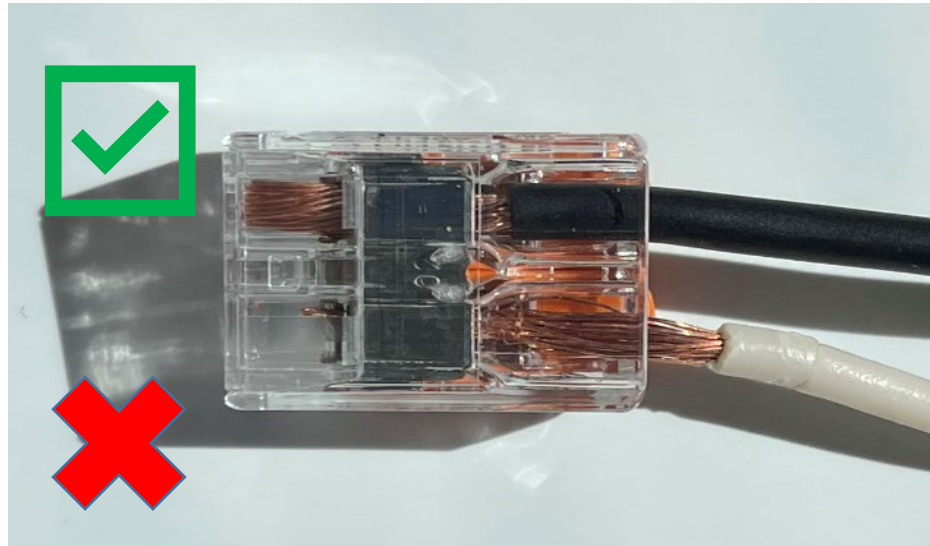


Connect Properly

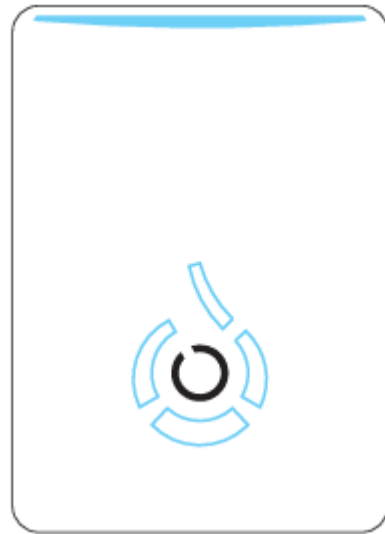


Wago Connectors

- Wires Must Be:
 - 10-gauge copper
 - Stripped to ½"
 - Fully Inserted
 - No exposed conductors
- Also
 - Jacket must fit inside connector, which sometimes means dryer cord will not work
 - Box not designed for wire nuts

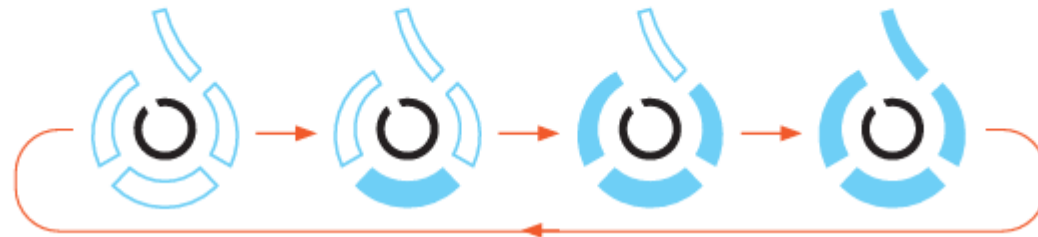


Automatic Filling



Filling of the tank:

When the tank is filling (at first startup or occasional refill), the 4 segments of the water drop icon blink the following way.



Touchscreen

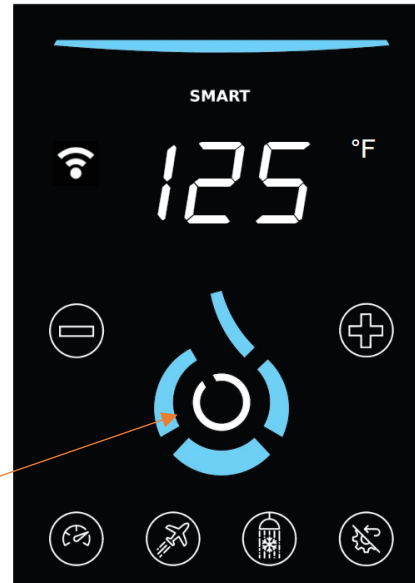
Flashing is networks available.
Solid is connected to Wi-Fi

Blue is normal, red is alarm.

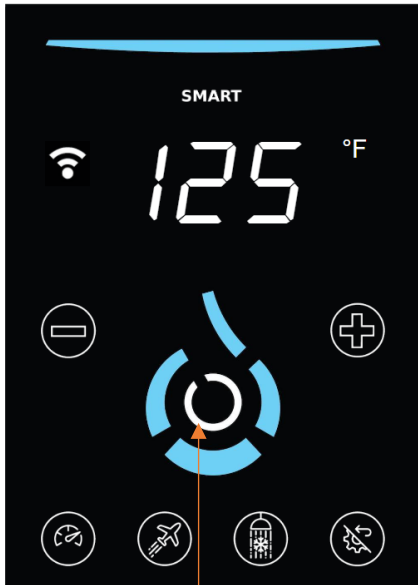
Press and hold to adjust
temperature setpoint.

Press and hold to
enter the settings
menu.

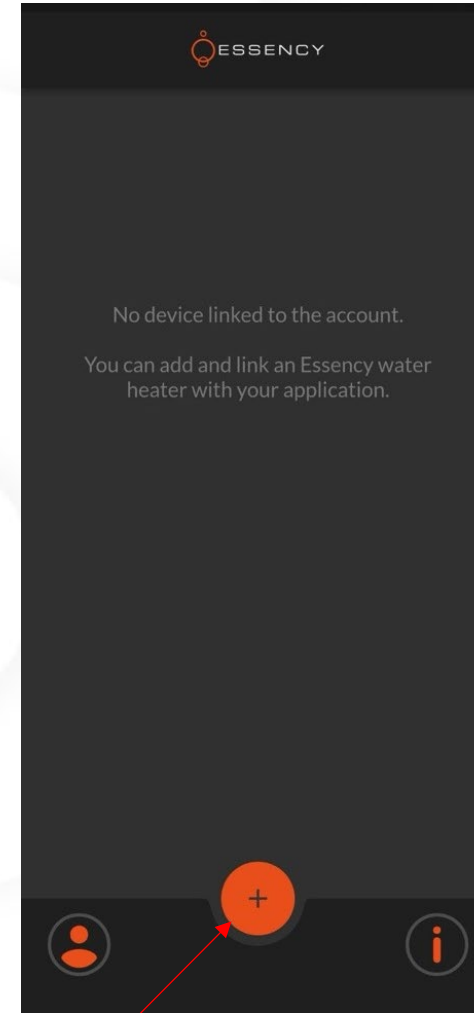
Press to confirm



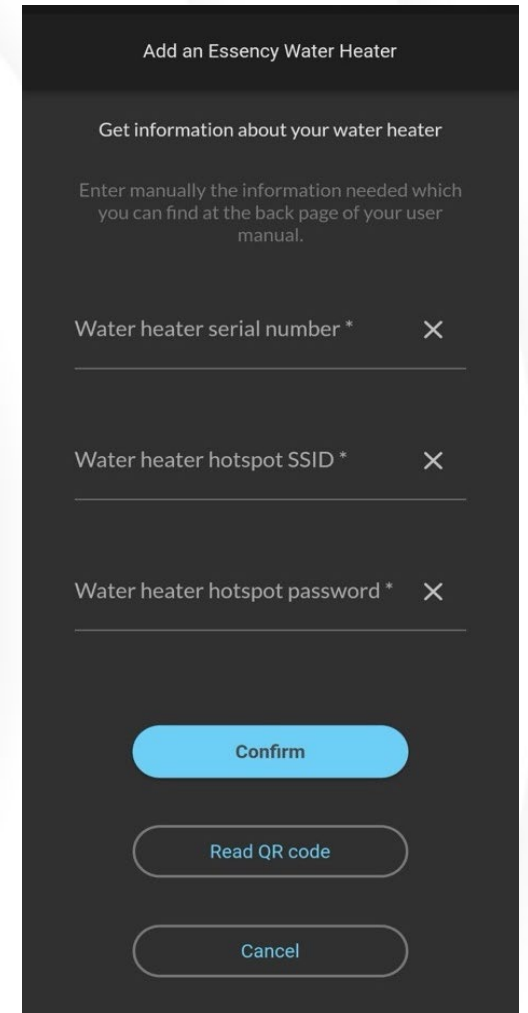
Touchscreen



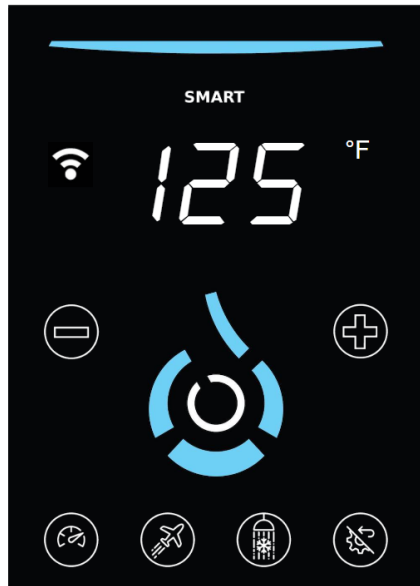
Press and hold to enter Wi-Fi pairing mode.



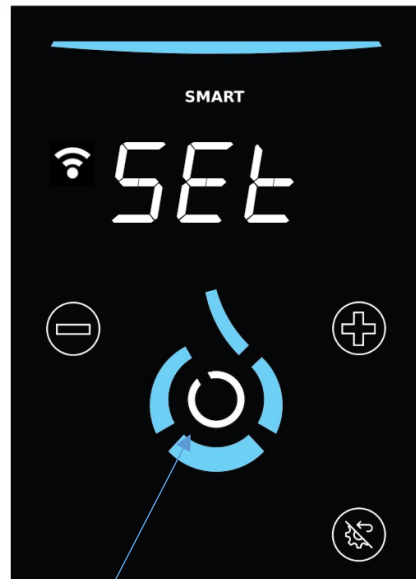
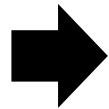
Press the + to add to the app



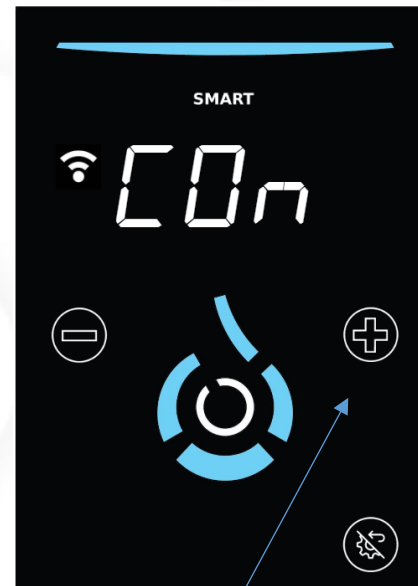
Software Update



Hold for 2 seconds



Press center button to confirm



Use the + or – button to scroll through the options.



Press center button to confirm



Keys to Successful Installation

- Wiring
 - Ensure correct gauge & voltage
 - Use stranded wire with strain relief, cut off appropriate length of jacket
 - Unscrew bracket if that makes it easier for you
 - No tension in wires, go in straight
 - Push Wire all the way to back of connector
 - Push levers down, small tug to double-check strong connection
- Recirculation
 - 1:45 min on, 15 mins off. 2 hours triggers leak detection, more flow is better
- Overflow
 - No need to remove black cap to install overflow line
 - Connect to old T&P line in a retrofit
 - Atmospheric, no need for glue
- Connect battery
- Call us with any questions!

EXR Overview

- 55-gal stored heat transfer medium.
- 3/4" Water Connections
- 240V, 18A (30A breaker)
- 65 x 22 x 26", rectangular footprint
- 100 lbs
- Wi-Fi Standard, App Enabled
- UEF = 0.93
- FHR = 80 gallons
- Life Expectancy = 30+ years
- Tank Warranty = 20 years
- Parts Warranty, including heat exchanger = 6 years

Installer Toolkit

- Pros Only Account
 - Essency Pro App
 - [Google Play](#)
 - [Apple](#)
- Touchscreen Simulator
 - <https://essencyhome.com/user-interface-simulator/>
- Troubleshooting Guide
 - <https://essencyhome.com/troubleshooting-guide-exr/>
- Technical Support Phone Number
 - Support: 888-229-6285
- Email
 - contact@essencyhome.com

Installer's Value Add

- Download the Pro App on your Device
 - Installation guide
 - Troubleshooting Guide
 - Videos
- Warranty Registration
 - Complete the form online
- Pro League sign up
 - Be a preferred installer

Thank You!

